

# YouthTRAILS

Greece

---



Youth Academy  
for Ecotourism

October 6–10 (including travel days)



# YouthTRAILS



Co-funded by  
the European Union



## What to expect



On October 6–10, we will meet in Greece for our second Transnational Partners' and Youth Workers' Meeting of the YouthTRAILS project.

During this three-day academy, we will co-develop a shared curriculum and toolbox for youth-friendly ecotourism, pilot innovative educational methods through hands-on sessions and field visits, and gather feedback to refine our approach





**YouthTRAILS**

Transnational Partners' & Youth Workers'  
Meeting



**YouthTRAILS**

## Days of the meeting



Arrival

**06/10**



Working Days

**07 – 09/10**



Departure

**10/10**



YouthTRAILS

# Meeting Objectives

---

Partners will meet to test the newly developed curriculum and toolbox with youth workers and ecotourism practitioners, exchange visits to showcase and learn from existing local practices, align on simple quality standards, and agree on next steps to roll out youth clubs and digital tools for ongoing collaboration.







# Agenda

---



YouthTRAILS

## DAY 01

**Arrival in Athens:**  
settling in our accommodation

## DAY 02

**09:30 – 10:00** | Welcome & Introduction

**10:00 – 10:30** | Project Overview & WP3 objectives

**10:30–11:30** | Module Session

**11:30 – 11:45** | Coffee Break

**11:45 – 13:00** | Module Session

**13:00 – 14:30** | Lunch

**14:30 – 15:30** | Module Session

## DAY 03

**09:00 – 11:00** | Drive to Hopeland

**11.30 – 12:00** | Coffee Break

**12.00 – 13:00** | Welcome Tour:

The facilities + storytelling of development and community engagement and Erasmus+ projects in remote rural areas)

**13:00 – 14:30** | Lunch

**14:30 – 16:00** | Module 2:

Community Engagement & Stakeholder Collaboration/ Field Visit (Hopeland)

**16:00 – 18:00** | Drive back to Athens



# Agenda

---



YouthTRAILS

## DAY 04

**09:30 – 10:30** | Module Session

**10:30 – 11:30** | Module Session

**11:30 – 11:45** | Coffee break

**11:30 – 12:30** | Module Session

**12:30 – 14:00** | Lunch

**14:30 – 16:00** | Toolbox materials and translation – Timeline for digital development

**16:00 – 17:00** | Goodbyes



The module slots are listed as placeholders for now. Feel free to suggest your preferred time slot, so we can finalize the agenda accordingly.



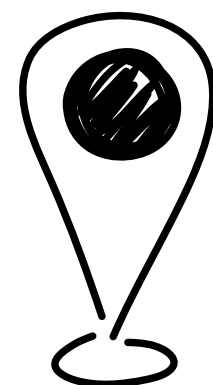




# Venue in Athens



YouthTRAILS



## Location

RoesCooperativaxHopeland headquarters  
in the Agios Nikolaos area of Athens  
(next metro station 'Agios Nikolaos')

Address: Leof. Ionias 97-99, Athens, 10445, Greece

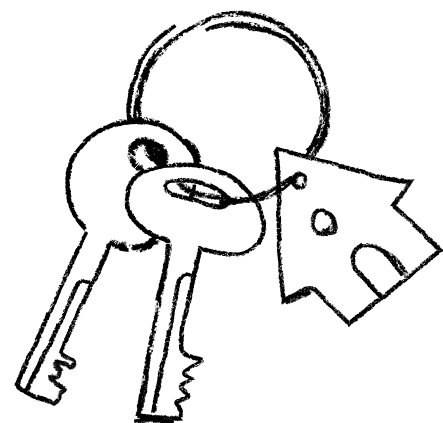




# Accommodation in Athens

---

## HERE ARE SOME SUGGESTIONS TO STAY NEARBY



There are plenty of accommodation options around our office in the Patisia area, including many Airbnbs. However, you may prefer staying closer to the city center, as areas like Monastiraki and Psiri are not only lively and central but also very well connected to our office by metro ( Green line).

**Airbnb and Booking are offering some good alternative options for accommodation.**

Some accommodations we have used in the past:

- Lux & Easy- Athens Metro Suites, Mpirmili 17, Athens, 11744, Greece
- Xenophon Hotel, Acharnon 340, K. Patisia

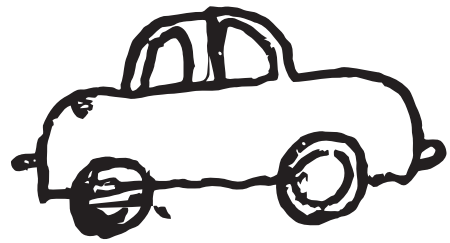




# Logistics



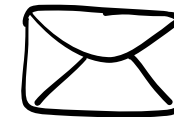
YouthTRAILS



Transportation to Hopeland will be arranged with our vans, departing from the office.

To help us coordinate logistics and ensure everyone can find suitable options, please complete the [Excel tracker](#) travel plans & accommodation suggestions once you have them.

**IF YOU'RE PLANNING TO STAY IN GREECE A BIT LONGER AFTER THE ACADEMY, LET US KNOW! WE'D BE HAPPY TO HELP ORGANIZE SOMETHING FOR THE WHOLE GROUP**



**If you're having any trouble finding accommodation, we're just one email away!**

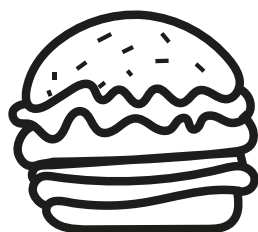


# FOOD SUGGESTIONS

---



AND FOR THOSE MOMENTS IN BETWEEN, HERE ARE A FEW NICE SPOTS CLOSE BY.



→ **Ama Lachi**

Greek cuisine – Plus beautiful garden!  
(Kallidromiou 69, Exarchia)

→ **Café Avissinia**

In this place you will transfer back  
time and you will taste delicious food!  
Kinetou 7, Athina 105 55

→ **To Mavro Provato of Press Cafe**

Greek meze restaurant  
Arrianou 33, Athina 116 35

→ **Mezedopolio Zargana**

Octopus, calamari, fried zucchini  
and eggplant, potato salad,  
& other greek delicacies!  
(Demertzi 24, Athina 104 45)

→ **Cookoomela Grill**

Delicious vegan gyros made of mushrooms!  
(Themistokleous 43, Exarchia)

\*\*\*If you are not into going out, you can always download the EFOOD DELIVERY or WOLT app and enjoy delicious food at the comfort of your accommodation :)





Once you've arrived in Athens International Airport "Eleftherios Venizelos", you have 2 options: (one way ticket price: 9€, ticket price with a return: 16€).

- 1 Take the metro blue line towards **Dimotiko Theatro**. Change in **Monastiraki** station and get on the green line towards **Kifisia** . Get off at **Agios Nikolaos** metro station.
- 2 Take the bus X95 (airport express) towards **Syntagma** and get off at Syntagma station. Take the blue line towards **Dimotiko Theatro**. Change in **Monastiraki** station and get on the green line towards **Kifisia**. Get off at **Agios Nikolaos** metro station.





# Hopeland – the location

Hopeland is situated **on a hill** near the village Malandreni and **located 130km** (approximately 2h) **south of Athens**. The nearest town is **Argos** which **is 12 km** away where you can find anything from small shops to supermarkets, banks, post offices, and bus stations. Closer to Hopeland and **4 km away** you can find **small shops for shopping and coffee**. Shops there are limited and unfortunately, it's not in walking distance so smart and **sustainable planning of supplies is needed**.

Facilities in Hopeland are basic but made with lots of love and work from previous Hopelanders

The whole venture runs in solar panels, therefore, electricity is limited and on rainy days or days with strong consumption of electricity, we can run out of electric power

Hopeland is a vegetarian venture.







# EMERGENCY CONTACT

---



- 112 European emergency number
- 166 National number for emergency assistance
- 100 First Emergency Response Unit Hellenic Police





# Let's meet, share and learn from each other!



Ελπιδοχώρι  
Hopeland

**Ελπιδοχώρι / Hopeland**

near Malantreni, Argolis, Greece

+306999876041

<https://hopeland.gr/>

[hello@hopeland.gr](mailto:hello@hopeland.gr)



**Co-funded by  
the European Union**

\* All the photos of this infoletter are taken in and around Hopeland by our previous volunteers